



Pole Line Hardware

CONTENTS

BOLTS: MACHINEL	1
BOLTS: DOUBLE ARMING	2
EYE BOLTS: SHOULDER	3
BOLTS: OVAL EYE	4
BOLTS: OVAL EYE DOUBLE ARMING	5
BOLTS: SPOOL	6
BOLTS: THIMBLE EYE	6
WASHER: ROUND	8
WASHER: SQUARE FLATE	8
WASHER: SQUARE CURVED	8
SPRING LOCK WASHER	9
SPRING R WASHER	9
SQUARE NUT	10
NUT	10
CONCAVE	10
OVAL EYE NUT	11
THIMBL EYE NUT	11
BOLT EYELET	12
THIMBL EYELET	13
GUY CLAMP	14
GUY HOOK	15
GUY ATTACHMENT	16
STRAIN DEADEND CLAMPS	17
SUSPENSION CLAMPS	18
LINE POST TRUNNION CLAMP	19
ANCHOR SHACKLE	20
BALL CLEVIS & BALL-Y CLEVIS	21
Y-CLEVIS CLEVIS	22
SOCKET EYE	23
SOCKET CLEVIS	25
SOCKET Y-CLEVIS	26
OVAL EYE BALL	27
Y-CLEVIS EYE	28

BOLTS: MACHINEL

- Made of high strength steel
- Hot-dip galvanized
- Six-inches or longer bolts with cone points
- Rolled threads
- Each bolt has a square head with a square nut
- Lengths other than those listed can be customized
- For low temperature products, add -C1.5 to the Catalog No.

Catalog No.	Thread Size (inches)	Bolt Length L (inches)	Thread Length T (inches)	Minimum Tensile Strength (Lbs.)	Approx. Weight Per 100 (Lbs.)
BM1202	1/2	2	1.38	8,500	20
BM1204	1/2	4	2	8,500	29
BM1206	1/2	6	2	8,500	38
BM1208	1/2	8	4	8,500	46
BM1210	1/2	10	4	8,500	55
BM1212	1/2	12	6	8,500	64
BM1214	1/2	14	6	8,500	73
BM1216	1/2	16	6	8,500	82
BM5802	5/8	2	1.38	20,000	34
BM5804	5/8	4	2	20,000	50
BM5806	5/8	6	2	20,000	66
BM5808	5/8	8	4	20,000	80
BM5810	5/8	10	4	20,000	66
BM5812	5/8	12	6	20,000	80
BM5814	5/8	14	6	20,000	66
BM5816	5/8	16	6	20,000	80
BM5818	5/8	18	6	20,000	107
BM5820	5/8	20	6	20,000	121
BM3408	3/4	8	4	30,000	120
BM3410	3/4	10	6	30,000	141
BM3412	3/4	12	6	30,000	171
BM3414	3/4	14	6	30,000	182
BM3416	3/4	16	6	30,000	203
BM3418	3/4	18	6	30,000	225
BM3420	3/4	20	6	30,000	245
BM3422	3/4	22	6	30,000	265


BM

BM3424	3/4	24	6	30,000	285
BM3426	3/4	26	6	30,000	305
BM3428	3/4	28	6	30,000	325
BM3430	3/4	30	6	30,000	345
BM7806	7/8	6	3	30,000	148
BM7808	7/8	8	4	30,000	183
BM7810	7/8	10	6	30,000	218
BM7812	7/8	12	6	30,000	253
BM7814	7/8	14	6	30,000	288
BM7816	7/8	16	6	30,000	323
BM7818	7/8	18	6	30,000	358
BM7820	7/8	20	6	30,000	393
BM7822	7/8	22	6	30,000	428
BM7824	7/8	24	6	30,000	463
BM7826	7/8	26	6	30,000	498



BM

BOLTS: DOUBLE ARMING

- Made of high strength steel
- Hot-dip galvanized
- Cone points
- Rolled threads
- Each bolt has a full thread rod with four square nuts
- Lengths other than those listed can be customized
- Maximum length is 45"
- For low temperature products, add -C1.5 to the Catalog No.

Catalog No.	Thread Size (inches)	Bolt Length L (inches)	Minimum Tensile Strength (Lbs.)	Approx. Weight Per 100 (Lbs.)
BDA5810	5/8	10	20,000	120
BDA5812	5/8	12	20,000	140
BDA5814	5/8	14	20,000	152
BDA5816	5/8	16	20,000	172
BDA5818	5/8	18	20,000	180
BDA5820	5/8	20	20,000	192
BDA3410	3/4	10	30,000	180



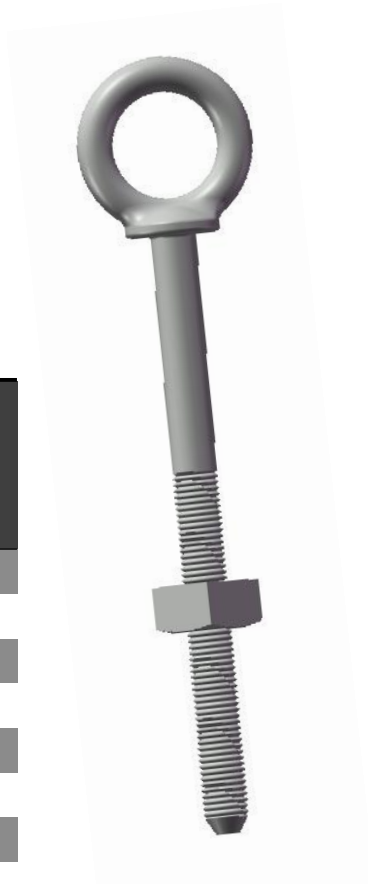
BDA

BDA3412	3/4	12	30,000	196
BDA3414	3/4	14	30,000	216
BDA3416	3/4	16	30,000	240
BDA3418	3/4	18	30,000	260
BDA3420	3/4	20	30,000	286
BDA7812	7/8	12	30,000	287
BDA7814	7/8	14	30,000	313
BDA7816	7/8	16	30,000	347
BDA7818	7/8	18	30,000	390
BDA7820	7/8	20	30,000	420

EYE BOLTS: SHOULDER

- Made of high strength steel
- Hot-dip galvanized
- Ten-inches or longer bolts with cone points
- Rolled threads
- Each bolt is assembled with a square nut
- Lengths other than those listed can be customized
- For low temperature products, add -C1.5 to the Catalog No.

Catalog No.	Thread Size (inches)	Bolt Length L (inches)	Thread Length T (inches)	Minimum Tensile Strength (Lbs.)	Approx. Weight Per 100 (Lbs.)
BSE3406	3/4	6	4	30,000	190
BSE3408	3/4	8	4	30,000	214
BSE3410	3/4	10	6	30,000	238
BSE3412	3/4	12	6	30,000	262
BSE3414	3/4	14	6	30,000	286
BSE3416	3/4	16	6	30,000	310
BSE3418	3/4	18	6	30,000	334
BSE3420	3/4	20	6	30,000	358
BSE3422	3/4	22	6	30,000	382
BSE3424	3/4	24	6	30,000	406
BSE3426	3/4	26	6	30,000	430
BSE3428	3/4	28	6	30,000	454
BSE3430	3/4	30	6	30,000	478
BSE7806	7/8	6	4	35,000	248



BSE

BSE7808	7/8	8	4	35,000	282
BSE7810	7/8	10	6	35,000	316
BSE7812	7/8	12	6	35,000	350
BSE7814	7/8	14	6	35,000	384
BSE7816	7/8	16	6	35,000	418
BSE7818	7/8	18	6	35,000	452
BSE7820	7/8	20	6	35,000	486
BSE7822	7/8	22	6	35,000	520
BSE7824	7/8	24	6	35,000	554
BSE7826	7/8	26	6	35,000	588
BSE7828	7/8	28	6	35,000	622
BSE7830	7/8	30	6	35,000	656

BOLTS: OVAL EYE

- Made of high strength steel
- Hot-dip galvanized
- Ten-inches or longer bolts with cone points
- Rolled threads
- Each bolt is assembled with a square nut
- Lengths other than those listed can be customized
- For low temperature products, add -C1.5 to the Catalog No.

Catalog No.	Thread Size (inches)	Bolt Length L (inches)	Thread Length T (inches)	Minimum Tensile Strength (Lbs.)	Approx. Weight Per 100 (Lbs.)
BOE5806	5/8	6	4	13,550	100
BOE5808	5/8	8	4	13,550	118
BOE5810	5/8	10	6	13,550	129
BOE5812	5/8	12	6	13,550	142
BOE5814	5/8	14	6	13,550	158
BOE5816	5/8	16	6	13,550	175
BOE5818	5/8	18	6	13,550	190
BOE5820	5/8	20	6	13,550	205
BOE5822	5/8	22	6	13,550	238
BOE5824	5/8	24	6	13,550	245
BOE5826	5/8	26	6	13,550	258



BOE5828	5/8	28	6	13,550	286
BOE5830	5/8	30	6	13,550	315
BOE3406	3/4	6	4	20,050	165
BOE3408	3/4	8	4	20,050	190
BOE3410	3/4	10	6	20,050	215
BOE3412	3/4	12	6	20,050	225
BOE3414	3/4	14	6	20,050	255
BOE3416	3/4	16	6	20,050	275
BOE3418	3/4	18	6	20,050	298
BOE3420	3/4	20	6	20,050	330
BOE3422	3/4	22	6	20,050	355
BOE3424	3/4	24	6	20,050	380
BOE3426	3/4	26	6	20,050	405
BOE3428	3/4	28	6	20,050	430
BOE3430	3/4	30	6	20,050	455

BOLTS: OVAL EYE DOUBLE ARMING

- Made of high strength steel
- Hot-dip galvanized
- Cone points
- Rolled threads
- Each bolt assembled with 3 square nuts
- Lengths other than those listed can be customized
- For low temperature products, add -C1.5 to the Catalog No.

Catalog No.	Thread Size (inches)	Bolt Length L (inches)	Thread Length T (inches)	Minimum Tensile Strength (Lbs.)	Approx. Weight Per 100 (Lbs.)
BOEDA5814	5/8	14	12	13,550	188
BOEDA5816	5/8	16	14	13,550	228
BOEDA5818	5/8	18	16	13,550	240
BOEDA5820	5/8	20	18	13,550	253
BOEDA5822	5/8	22	20	13,550	273
BOEDA5824	5/8	24	22	13,550	293
BOEDA5826	5/8	26	24	13,550	313
BOEDA3416	3/4	16	14	20,050	306
BOEDA3418	3/4	18	16	20,050	326
BOEDA3420	3/4	20	18	20,050	346
BOEDA3422	3/4	22	20	20,050	350
BOEDA3424	3/4	24	22	20,050	380



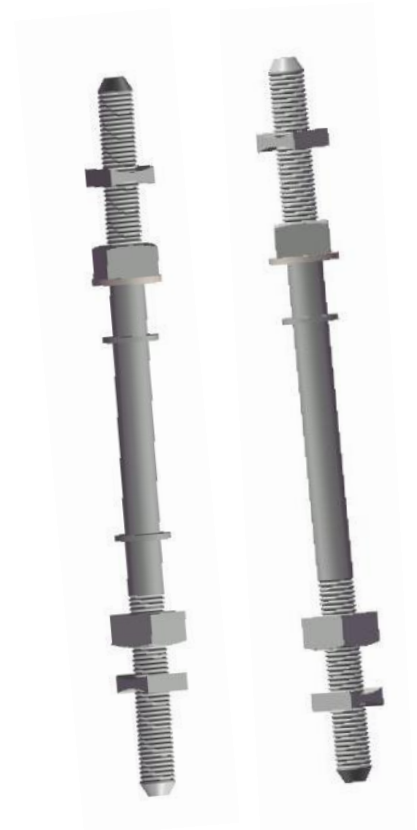
BOEDA

BOEDA3426 3/4 26 24 20,050 410

BOLTS: SPOOL

- Used for side-of-pole installation when supporting neutral conductors and secondary service wires
- Made of high strength steel
- Hot-dip galvanized
- Have 5/8 rolled threads
- Double upset provide 1 5/8 clearance between insulator and pole

Catalog No.	Shank Length (inches)	Overall Length (inches)	Thread Length (inches)	Minimum Tensile Strength (Lbs.)	Approx. Weight Per 100 (Lbs.)
BS5813D5	9	13 1/2	4	13,550	148
BS5814D5	10	14 1/2	4	13,550	152
BS5816D5	12	16 1/2	6	13,550	160
BS5818D5	14	18 1/2	6	13,550	180
BSD5815	9	15	4	13,550	160
BSD5816	10	16	4	13,550	164
BSD5818	12	18	6	13,550	176



BS

BSD

BOLTS: THIMBLE EYE

- Made of high strength steel
- Hot-dip galvanized
- Rolled threads
- Forged in two styles: Straight and at 45°angle

Catalog No.	Thread Size (inches)	Bolt Length (inches)	Thread Length (inches)	Minimum Tensile Strength (Lbs.)	Approx. Weight Per 100 (Lbs.)
BTES5810	5/8	10	4	13,550	140
BTES5812	5/8	12	6	13,550	152
BTES5814	5/8	14	6	13,550	164

BTES5816	5/8	16	6	13,550	172
BTES5818	5/8	18	6	13,550	192
BTES3412	3/4	12	6	20,050	212
BTES3414	3/4	14	6	20,050	232
BTEA5810	5/8	10	4	13,550	148
BTEA5812	5/8	12	6	13,550	152
BTEA5814	5/8	14	6	13,550	176
BTEA5816	5/8	16	6	13,550	184
BTEA3410	3/4	10	4	20,050	200
BTEA3412	3/4	12	6	20,050	220
BTEA3414	3/4	14	6	20,050	236



BTES

BTEA

WASHER: ROUND

- Made of steel
- Hot-dip galvanized

Catalog No.	Hole Diameter (inches)	Outside Diameter (inches)	Thickness (inches)	Approx. Weight Per 1000 (Lbs.)
RW3801	7/16	1	0.083	20
RW1201	9/16	1 3/8	0.109	28
RW5801	11/16	1 3/4	0.134	62
RW3401	13/16	2	0.148	102

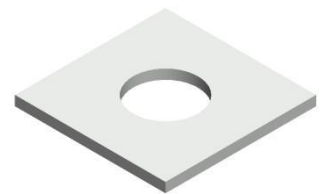


RW

WASHER: SQUARE FLATE

- Made of steel
- Hot-dip galvanized

Catalog No.	Hole Diameter (inches)	Width and Length (inches)	Thickness (inches)	Approx. Weight Per 1000 (Lbs.)
SFW1201	9/16	2	1/8	112
SFW5801	11/16	2 1/4	3/16	228
SFW3401	13/16	3	3/16	460
SFW7801	15/16	4	1/4	1120



SFW

WASHER: SQUARE CURVED

- Made of steel
- Hot-dip galvanized



SCW

Catalog No.	Hole Diameter (inches)	Width and Length (inches)	Thickness (inches)	Approx. Weight Per 100 (Lbs.)
SCW5801	11/16	2 1/2	3/16	32
SCW3401	13/16	3	1/4	62
SCW7801	15/16	4	1/4	110

SPRING LOCK WASHER

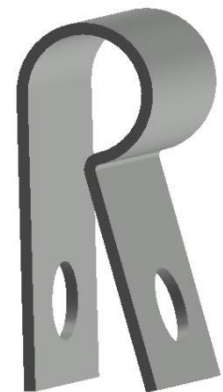
- Designed to ensure a tight fit by keeping the bolt and nut assembly in tension
- Made of spring steel
- Hot-dip galvanized

Catalog No.	Coil Number	Bolt Diameter (inches)	Size Section (inches)	Approx. Weight Per 1000 (Lbs.)
SLWS38	Single	3/8	.141x.094	7.4
SLWS12	Single	1/2	.171x.125	10.8
SLWS58	Single	5/8	.203x.156	20.5
SLWS34	Single	3/4	.234x.188	41
SLWD38	Double	3/8	.141x.094	10.3
SLWD12	Double	1/2	.171x.125	28.7
SLWD58	Double	5/8	.203x.156	52
SLWD34	Double	3/4	.234x.188	74

SPRING R WASHER

- Spring R washers are used to keep units in tension when wood crossarm or wood pole shrinkage occurs
- Designed to enable the nut of a bolt to seat flat on the spring washer surface when it is compressed
- Made of spring steel
- Hot-dip galvanized

Catalog No.	Bolt Diameter (inches)	Length (inches)	Approx. Weight Per 100 (Lbs.)



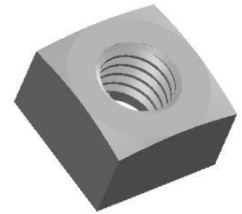
SRW

SRW12	1/2	2 7/16	25.2
SRW58	5/8	3 3/4	92
SRW34	3/4	3 3/4	86
SRW78	7/8	3 3/4	86
SRW01	1	3 3/4	88

SQUARE NUT

- Manufactured in accordance with ANSI Specifications B18.2.2 and tapped Unified National Coarse Threads Series Class 2B after centrifugal hot-dip galvanizing, oversize for galvanized bolts and rods
- Regular square nuts are used on all types of threaded bolts and insulator pins
- Made of steel
- Hot-dip galvanized

Catalog No.	Bolt Diameter (inches)	Approx. Weight Per 1000 (Lbs.)
SN12	1/2	52
SN58	5/8	104
SN34	3/4	124
SN78	7/8	130



SN

CONCAVE

- When the surface of the arch contacts the top of the common nut or the bearing surface, the wrench flattens the arch and deflects the nut
- 1/2 to 1 turn with a wrench will lock it securely.
- Made of steel
- Hot dip galvanized

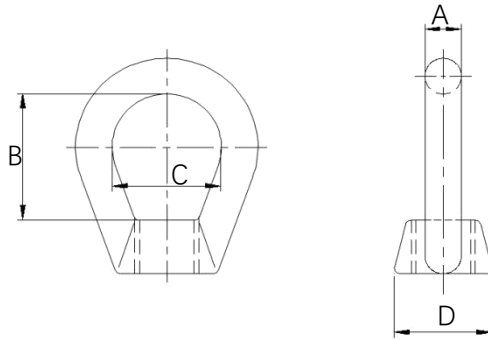
Catalog No.	Bolt Diameter (inches)	Approx. Weight Per 1000 (Lbs.)
BNC12	1/2	20
BNC58	5/8	32
BNC34	3/4	62
BNC78	7/8	85



BNC

OVAL EYE NUT

- Connect to bolt threads
- Used for deadending with suspension or strain insulator
- Made of steel
- Hot dip galvanized
- For low temperature products, add -C1.5 to the Catalog No

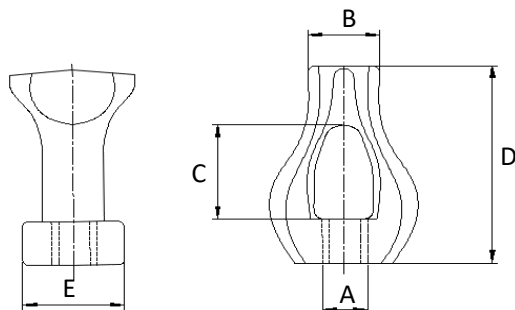


ENO

Catalog No.	Bolt Diameter (inches)	Dim A (inches)	Dim B (inches)	Dim C (inches)	Dim D (inches)	Carton QTY	Carton Weight (Lbs.)
ENO12	1/2	1/2	1.77	1.50	1.38	50	35
ENO58	5/8	1/2	1.77	1.50	1.38	50	36
ENO34	3/4	1/2	1.77	1.50	1.38	50	36

THIMBL EYE NUT

- Connect to bolt threads
- Used for span guys
- Made of steel
- Hot dip galvanized

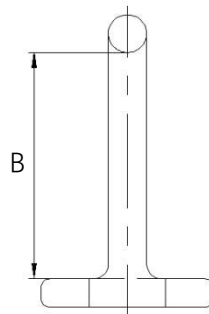
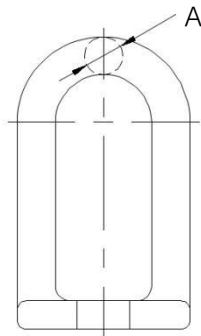


TN

Catalog No.	Dim A (inches)	Dim B (inches)	Dim C (inches)	Dim D (inches)	Dim E (inches)	Approx. Weight Per 100 (Lbs.)
TN58	5/8	1.13	1.38	3	1.50	103
TN34	3/4	1.13	1.38	3	1.50	103

BOLT EYELET

- Eyelets are used under the head or nut of a bolt.
- Standard eyelets are used for deadending
- Have a slotted hole for ease in inserting the bolt
- Made of steel
- Hot dip galvanized

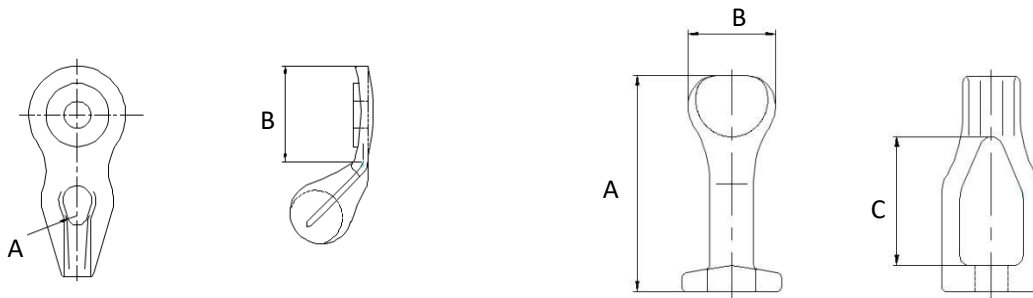


EL

Catalog No.	Bolt Diameter (inches)	Dim A (inches)	Dim B (inches)	Minimum Tensile Strength (Lbs.)	Approx. Weight Per 100 (Lbs.)
EL5801	5/8	0.5	3	13,550	73
EL5802	5/8	0.63	3	20,050	132
EL5803	5/8	0.63	5	20,050	172
EL3401	3/4	0.5	3	13,550	73
EL3402	3/4	0.63	3	20,050	132
EL3403	3/4	0.63	5	20,050	172

THIMBL EYELET

- Straight thimble eyelets are used for span guys
- Angle thimble eyelets are used for down guys
- Straight thimble eyelets have a slotted hole for ease in inserting the bolt
- Made of steel
- Hot dip galvanized



TELA

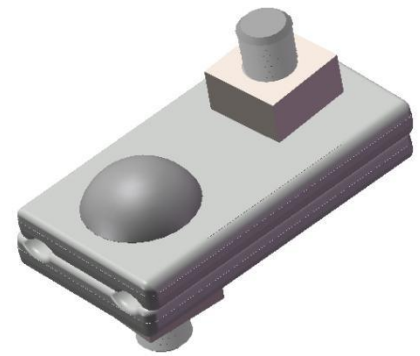
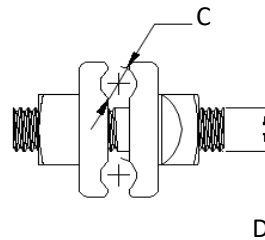
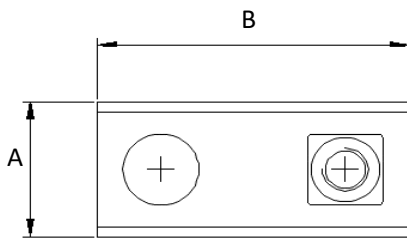


TEL

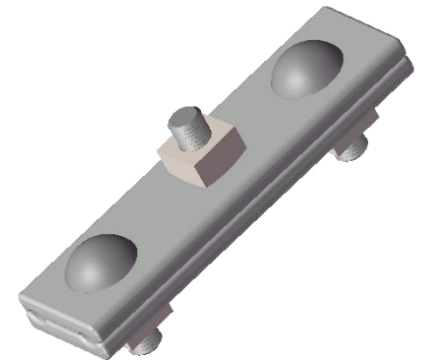
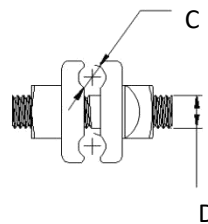
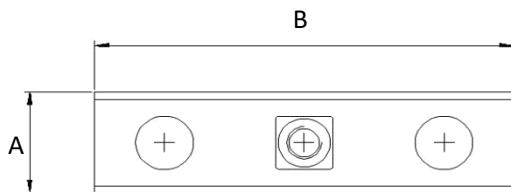
Catalog No.	Bolt Diameter (inches)	Dim A (inches)	Dim B (inches)	Dim C (inches)	Minimum Tensile Strength (Lbs.)	Approx. Weight Per 100 (Lbs.)
TELA58	5/8	0.25	2.87	-	13,550	140
TELA34	3/4	0.25	2.87	-	13,550	140
TEL5801	5/8	4.31	1.81	2.56	13,550	128
TEL3401	3/4	4.31	1.81	2.56	13,550	124

GUY CLAMP

- Made of forged steel
- Hot dip galvanized



JS1030

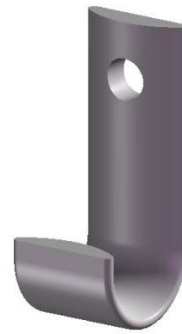
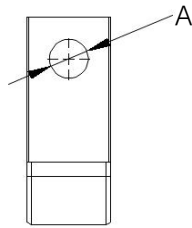
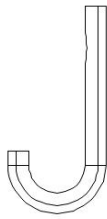


JS930

Catalog No.	Dim A (inches)	Dim B (inches)	Dim C (inches)	Dim D (inches)	Strand Diameter (inches)	Approx. Weight Per 100 (Lbs.)
JS1030	1.75	3.13	0.39	1/2	3/16-3/8	128
JS930	1.75	6.00	0.47	1/2	3/16-7/16	225

GUY HOOK

- Made of steel
- Hot dip galvanized

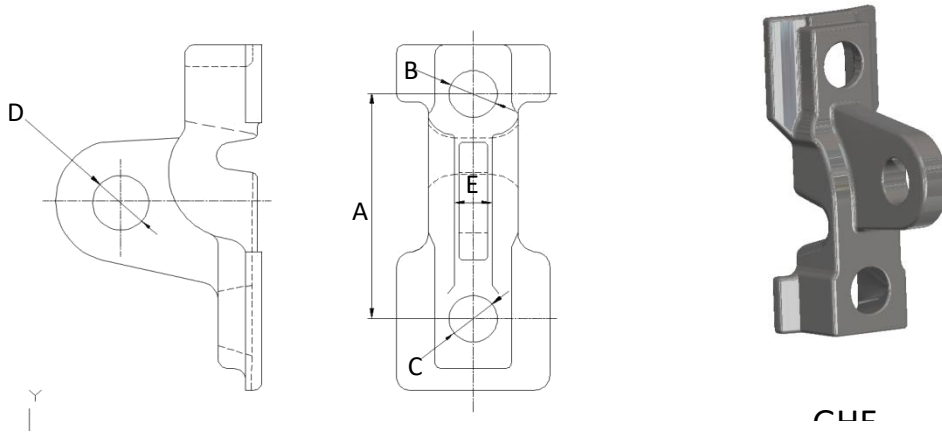


JS1018 & JS1019

Catalog No.	Dim A (inches)	Approx. Weight Per 100 (Lbs.)
JS1018	0.55	128
JS1019	0.69	225

GUY ATTACHMENT

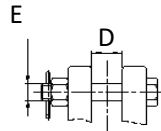
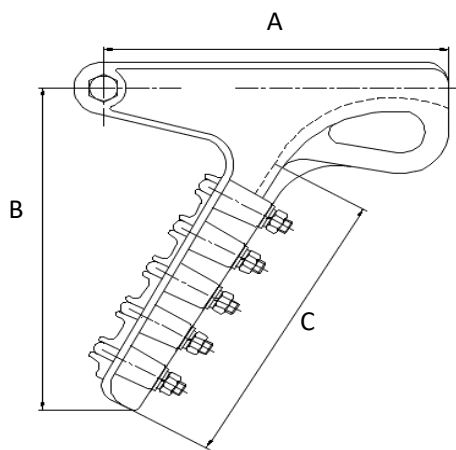
- Made of ductile iron
- Hot dip galvanized



Catalog No.	Dim A (inches)	Dim B (inches)	Dim C (inches)	Dim D (inches)	Dim E (inches)	Approx. Weight Per 100 (Lbs.)
GHE4-1316	4.00	0.81	0.81	0.81	0.88	203
GHE4-1116	4.00	0.81	0.69	0.63	0.69	238
GHE6-1518	6.00	0.83	0.83	0.83	0.88	510

STRAIN DEADEND CLAMPS

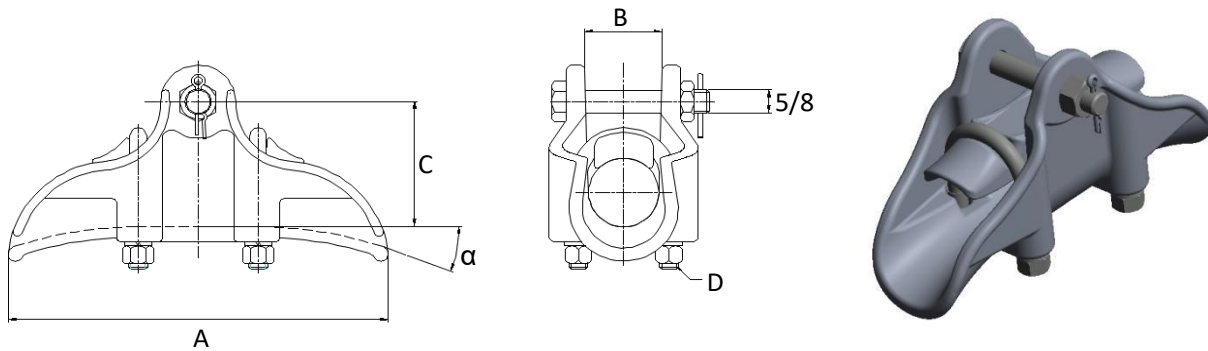
- Material:
 - Body and Keeper-Aluminum alloy or Ductile iron,galvanized
 - Bolt-Galvanized steel
 - Cotter key-Stainless steel
- For socket fitting, add “-SE”to Catalog No.
- For clevis fitting,add “-CE”to Catalog No.



Catalog No.	Clamping Range (inches)	Dim A (inches)	Dim B (inches)	Dim C (inches)	Dim D (inches)	Dim E (inches)	U Bolts No-Size	Ultimate Strength (Lbs.)	Body and keeper Material
DC-70-20	.30-.75	10.25	8.38	6.50	.94	5/8	4-1/2	20,000	ALUMINUM
DC-86-25	.46-.94	11.25	9.62	7.38	1.06	5/8	4-1/2	25,000	ALUMINUM
DC-112-30	.50-1.20	13.12	11.50	8.25	1.38	3/4	5-1/2	30,000	ALUMINUM
DC-130-35	.70-1.42	14.00	13.12	9.5	1.65	3/4	5-5/8	35,000	ALUMINUM
DC-185-50	1.30-1.85	17.00	18.00	12.38	2.13	1	5-5/8	50,000	ALUMINUM
DCS-65-15	.20-.65	5.88	-	4.63	.69	5/8	2-1/2	15,000	DUCTILE IRON
DCS-68-18	.20-.68	8.00	-	7.38	.69	5/8	3-1/2	18,000	DUCTILE IRON
DCS-84-30	.36-.84	10.75	10.38	8.44	.94	5/8	4 1/2	30,000	DUCTILE IRON

SUSPENSION CLAMPS

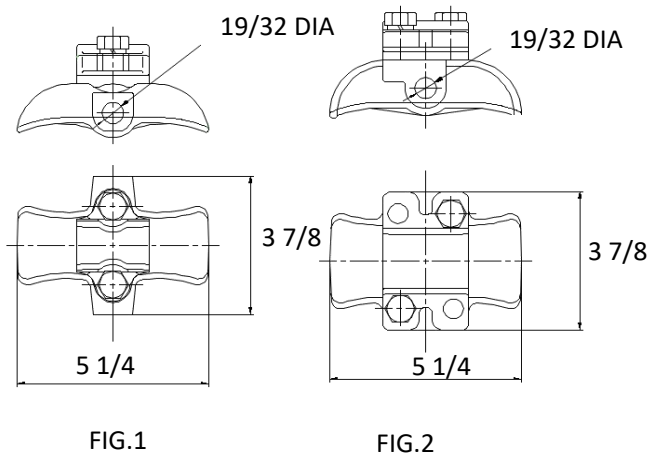
- Material:
 - Body and Keeper-Aluminum alloy or Ductile iron,galvanized
 - Bolt-Galvanized steel
 - Cotter key-Stainless steel
- For socket fitting, add “-SE”to Catalog No.
- For clevis fitting,add “-CE”to Catalog No.



Catalog No.	Clamping Range (inches)	Dim A (inches)	Dim B (inches)	Dim C (inches)	Dim D (inches)	ULTIMATE STRENGTH (Lbs.)	Body and keeper Material
SC08518	.40-.85	7.50	0.98	2.56	1/2	18,000	ALUMINUM
SC10425	.50-1.04	8.12	1.15	2 3/4	1/2	25,000	ALUMINUM
SC11825	.70-1.18	8.00	1.26	2.75	1/2	25,000	ALUMINUM
SC13925	.90-1.39	8.88	1.50	3.00	1/2	25,000	ALUMINUM
SC16225	1.10-1.62	9.50	1.69	3.08	1/2	25,000	ALUMINUM
SC18225	1.25-1.82	10.00	1.92	3.37	1/2	25,000	ALUMINUM
SC20425	1.40-2.04	10.50	2.09	3.53	1/2	25,000	ALUMINUM
SCS04616	.18-.46	5.73	0.66	2.00	1/2	16,000	DUCTILE IRON
SCS06016	.20-.60	6.50	0.91	2.00	1/2	16,000	DUCTILE IRON
SCS07018	.20-.70	6.50	0.91	2.00	1/2	16,000	DUCTILE IRON
SCS10425	.5-1.04	8.15	1.17	2.75	1/2	25,000	DUCTILE IRON
SCS11025	.5-1.10	8.15	1.17	2.75	1/2	25,000	DUCTILE IRON

LINE POST TRUNNION CLAMP

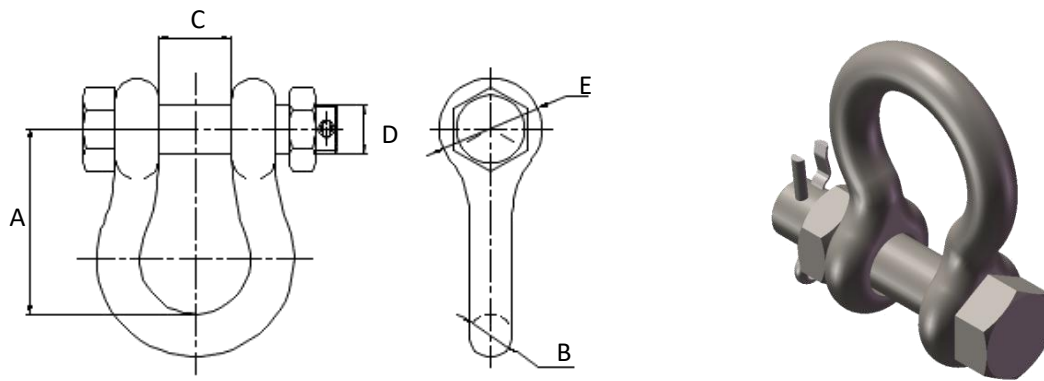
- Designed for use on tangent suspension spans with horizontal or vertical post insulators
- Material:
 - Body and Keeper-Aluminum alloy or Ductile iron,galvanized
 - Bolt-Galvanized steel
 - Spring-Stainless steel
- For single conical spring, add “-S”to Catalog No.
- For double conical springs, add “-2S”to Catalog No.



Catalog No.	Fig.No.	Body and keeper Material	Clamping Range (inches)	Approx. Weight Per 100 (Lbs.)
SATC057	1	ALUMINUM	.25-.57	81
SATC084	1	ALUMINUM	.35-.84	95
SATC106	1	ALUMINUM	.50-1.06	98
SATC150	1	ALUMINUM	1.00-1.50	110
SATC200	2	ALUMINUM	1.50-2.00	172
SSTC057	1	DUCTILE IRON	.23-.57	250
SSTC086	1	DUCTILE IRON	.35-.86	260
SSTC118	1	DUCTILE IRON	.50-1.18	273
SSTC150	1	DUCTILE IRON	.93-1.50	295
SSTC200	2	DUCTILE IRON	1.50-2.00	310

ANCHOR SHACKLE

- Anchor shackles are used for attaching suspension insulators to towers, yokes and double arming plates
- Material:
 - Body-Forged steel
 - Pin or Bolt-High grade steel
 - Cotter key-Stainless steel
- All ferrous parts are hot dip galvanized
- For low temperature products, add -C1.5 to the Catalog No.



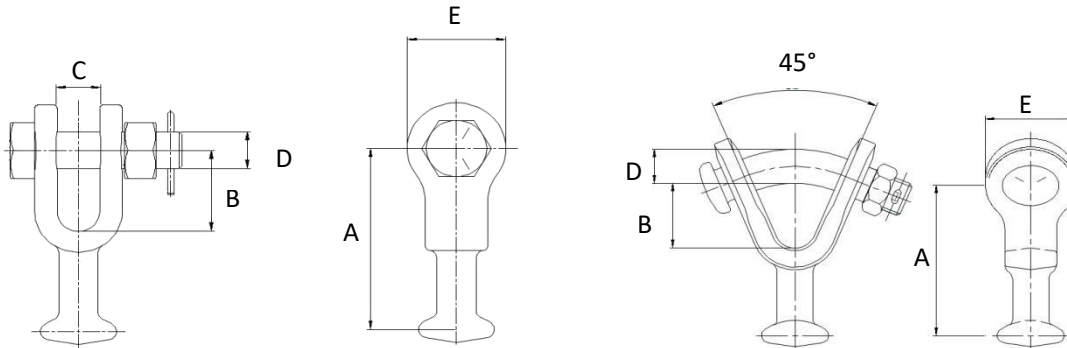
Catalog No.	Dim A (inches)	Dim B (inches)	Dim C (inches)	Dim D (inches)	Dim E (inches)	Ultimate Strength (Lbs.)	Approx. Weight Per 100 (Lbs.)
AS30BNC	2.76	0.63	7/8	5/8	1.57	30,000	150
AS36BNC	3.15	0.79	0.87	7/8	1.89	36,000	253
AS50BNC	3.44	0.75	1.25	1	1.87	50,000	195
AS60BNC	3.5	0.75	8/9	3/4	1.87	60,000	220
AS60WBNC	3.44	0.81	1.25	7/8	1.87	60,000	297
AS72BNC	3.5	0.75	1 3/8	7/8	1.87	72,000	275
AS80BNC	4.31	1	1.19	1 1/8	2.37	80,000	419
AS80WBNC	3.75	0.87	1.44	1	2.13	80,000	398

AS90BNC	4.31	1	1.69	1 1/8	2.37	90,000	580
AS100BNC	4.31	1	1.69	1 1/8	2.37	100,000	572
AS150BNC	5.19	1.25	2	1 3/8	3.06	150,000	1100
AS168BNC	6	1.37	2.25	1 1/2	3.25	168,000	1399

BALL CLEVIS & BALL-Y CLEVIS

- Ball clevises are used to connect to ball and socket insulators
- Material:
 - Body-Forged steel
 - Bolt-High grade steel
 - Cotter key-Stainless steel
- All ferrous parts are hot dip galvanized

For low temperature products, add -C1.5 to the Catalog No



BC

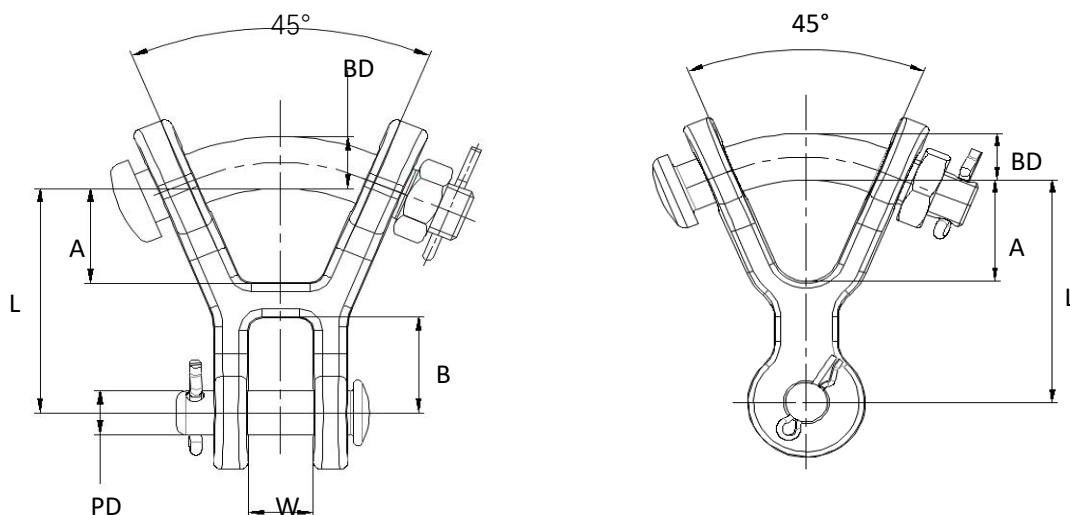


BYC

Catalog No.	Fig No.	Ball ANSI Class	Dim A (inches)	Dim B (inches)	Dim C (inches)	Dim D (inches)	Dim E (inches)	Ultimate Strength (Lbs.)	Approx. Weight Per 100 (Lbs.)
BC30	1	52-3 52-5	3.94	2.40	0.81	5/8	1.5	30,000	124
BC30A	1	52-3 52-5	3.03	1.57	0.94	3/4	0.71	30,000	212
BC50	1	52-8 52-11	4.31	2.00	0.94	7/8	2.19	50,000	255
BYC30	2	52-3 52-5	3.31	1.50	-	3/4	1.73	30,000	194
BYC50	2	52-8 52-11	4.33	2	-	7/8	2.19	50,000	286

Y-CLEVIS CLEVIS

- Material:
 - Body-Forged steel
 - Pin or Bolt-High grade steel
 - Cotter key-Stainless steel
- All ferrous parts are hot dip galvanized
- For low temperature products, add -C1.5 to the Catalog No.
- For bolt,nut,cotter pin option at clevis pin,add -BC to the Catalog No.





YCC

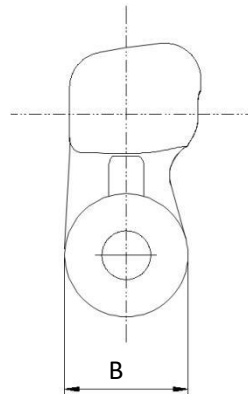
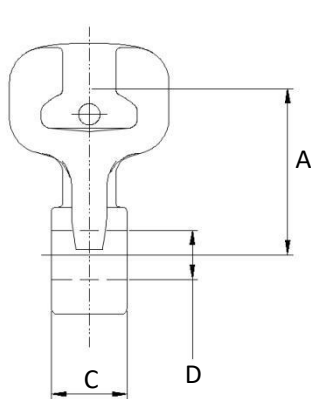


YCCR

Catalog No.	Dim L (inches)	Dim A (inches)	Dim B (inches)	Dim W (inches)	Dim BD (inches)	Dim PD (inches)	Ultimate Strength (Lbs.)	Approx. Weight Per 100 (Lbs.)
YCC30	3.25	1.37	1.37	0.87	3/4	5/8	30,000	262
YCCR30	3.56	1.62	1.56	0.81	3/4	5/8	30,000	233

SOCKET EYE

- Socket clevises are used to connect to ball and socket insulators
- Material:
 - Body-Forged steel
 - Security key-Stainless steel
- All ferrous parts are hot dip galvanized
- For low temperature products, add -C1.5 to the Catalog No.

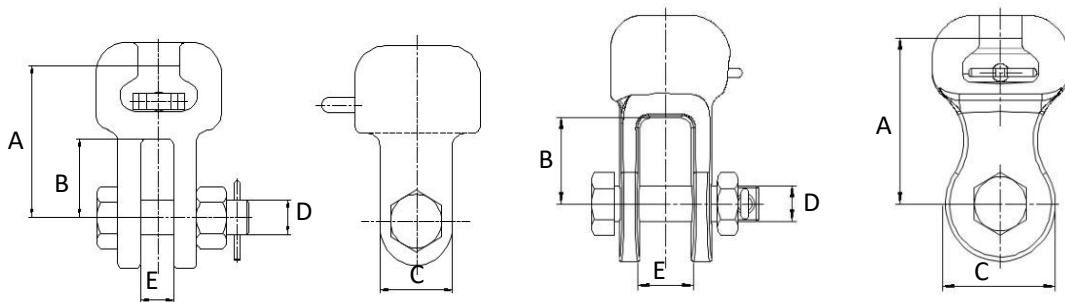


SE

Catalog No.	Ball ANSI Class	Dim A (inches)	Dim B (inches)	Dim C (inches)	Dim D (inches)	Ultimate Strength (Lbs.)	Approx. Weight Per 100 (Lbs.)
SE30	52-3 52-5	2.19	1.69	0.87	0.81	30,000	147
SE30A	52-3 52-5	2.28	1.74	1.06	0.69	30,000	161
SE30B	52-3 52-5	2.06	0.81	0.63	0.81	30,000	134
SE30C	52-3 52-5	2.76	0.79	1.26	0.79	30,000	150
SE30L	52-3 52-5	6.17	2.00	0.69	0.69	30,000	231
SE50A	52-8 52-11	3.35	2.17	0.75	0.87	50,000	342
SE50B	52-8 52-11	3.37	1.75	2.19	0.81	50,000	317

SOCKET CLEVIS

- Socket clevises are used to connect to ball and socket insulators
- Material:
 - Body-Forged steel
 - Bolt-High grade steel
 - Cotter key-Stainless steel
 - Security key-Stainless steel
- All ferrous parts are hot dip galvanized
- For low temperature products, add -C1.5 to the Catalog No.



SC

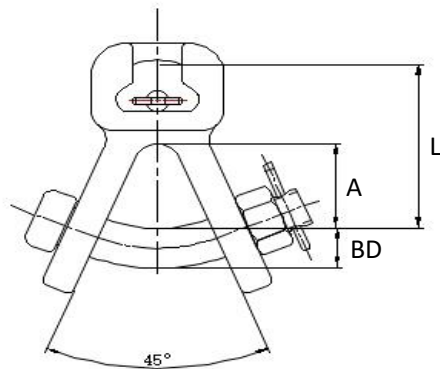


SCR

Catalog No.	Ball ANSI Class	Dim A (inches)	Dim B (inches)	Dim C (inches)	Dim D (inches)	Dim E (inches)	Ultimate Strength (Lbs.)	Approx. Weight Per 100 (Lbs.)
SCR30BNC	52-3 52-5	2.61	1.50	2.00	5/8	0.94	35,000	242
SC30BNC	52-3 52-5	2.64	1.75	2.00	5/8	0.81	30,000	240
SC50BNC	52-8 52-11	3.44	2.32	2.26	7/8	1.13	50,000	440
SC50ABNC	52-8 52-11	3.31	1.81	1.89	3/4	1.06	50,000	341

SOCKET Y-CLEVIS

- Socket Y clevises are used to connect to ball and socket insulators
- Material:
 - Body-Forged steel
 - Bolt-High grade steel
 - Cotter key-Stainless steel
 - Security key-Stainless steel
- All ferrous parts are hot dip galvanized
- For low temperature products, add -C1.5 to the Catalog No.

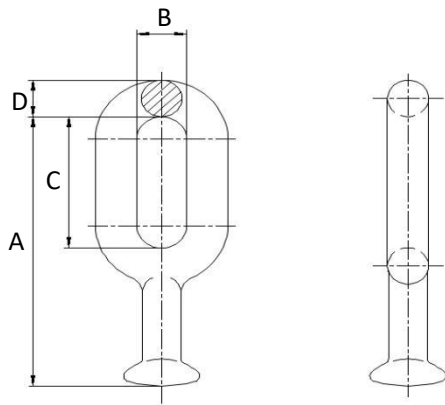


SYC

Catalog No.	Ball ANSI Class	Dim L (inches)	Dim A (inches)	Dim BD (inches)	Ultimate Strength (Lbs.)	Approx. Weight Per 100 (Lbs.)
SYC30	52-3 52-5	2.84	1.69	7/8	30,000	506
SYC50	52-8 52-11	2.85	1.69	7/8	50,000	518

OVAL EYE BALL

- Ball oval eyes are used to connect to ball and socket insulators
- Material-Forged steel
- Hot dip galvanized
- For low temperature products, add -C1.5 to the Catalog No.

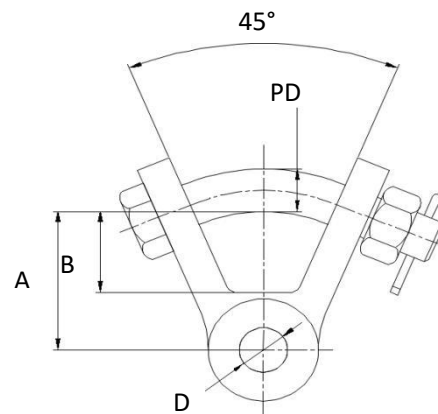
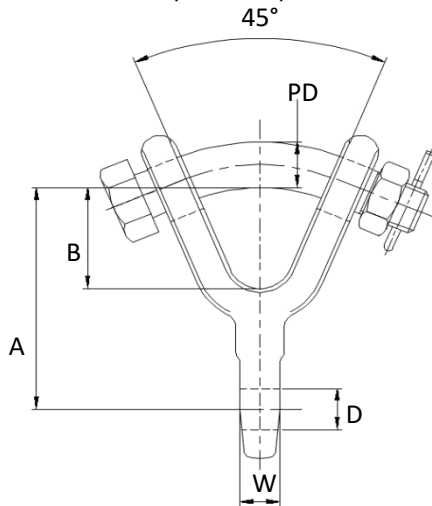


OEB

Catalog No.	Ball ANSI Class	Dim A (inches)	Dim B (inches)	Dim C (inches)	Dim D (inches)	Ultimate Strength (Lbs.)	Approx. Weight Per 100 (Lbs.)
OEB30	52-3 52-5	3.72	1.00	2.00	0.69	30,000	101
OEB50	52-8 52-11	4.50	1.25	2.50	0.75	50,000	154

Y-CLEVIS EYE

- Material:
 - Body-Forged steel
 - Bolt-High grade steel
 - Cotter key-Stainless steel
- All ferrous parts are hot dip galvanized
- For low temperature products, add -C1.5 to the Catalog No.



×



YCE



YCER

Catalog No.	Dim A (inches)	Dim B (inches)	Dim D (inches)	Dim W (inches)	Dim PD (inches)	Ultimate Strength (Lbs.)	Approx. Weight Per 100 (Lbs.)
YCE30	3.69	1.69	0.69	0.63	3/4	30,000	200
YCER30	3.63	1.63	0.69	0.63	3/4	30,000	184
YCER30A	2.44	1.56	0.81	0.75	5/8	30,000	205